



Solenoid Driver KCD0-SD-Ex1.1245

- 1-channel isolated barrier
- 24 V DC supply (loop powered)
- Current limit 45 mA at 12 V DC
- Housing width 12.5 mm
- Up to SIL 3 acc. to IEC/EN 61508



SIL 3



Function

This isolated barrier is used for intrinsic safety applications.

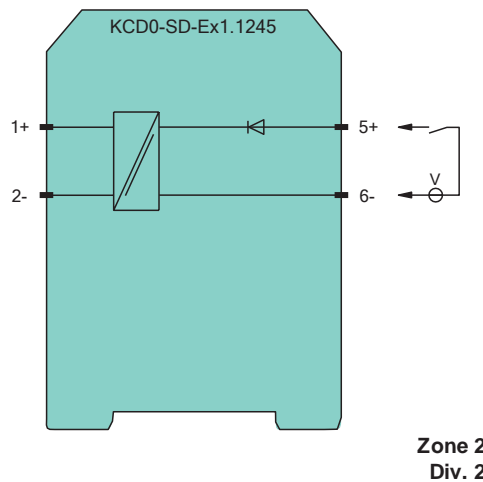
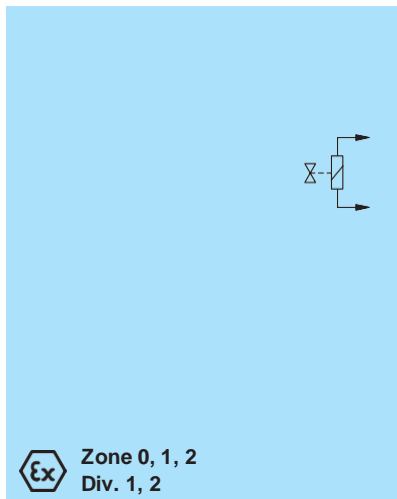
The device supplies power to solenoids, LEDs and audible alarms located in a hazardous area.

The device is loop powered, so the available energy at the output is received from the input signal. The output signal has a resistive characteristic.

As a result the output voltage and current are dependent on the load and the input voltage

At full load, 12 V at 45 mA is available for the hazardous area application.

Connection



Technical Data

General specifications		
Signal type	Digital Output	
Functional safety related parameters		
Safety Integrity Level (SIL)	SIL 3	
Supply		
Rated voltage	U_r	loop powered
Power dissipation	< 1 W	
Input		
Connection side	control side	
Connection	terminals 5, 6	
Rated voltage	U_r	19 ... 30 V DC

Refer to "General Notes Relating to Pepperl+Fuchs Product Information".

Pepperl+Fuchs Group
www.pepperl-fuchs.com

Iran: +9821 91007267
info@omranniroo.com

Germany: +49 621 776 2222
pa-info@de.pepperl-fuchs.com

Singapore: +65 6779 9091
pa-info@sg.pepperl-fuchs.com



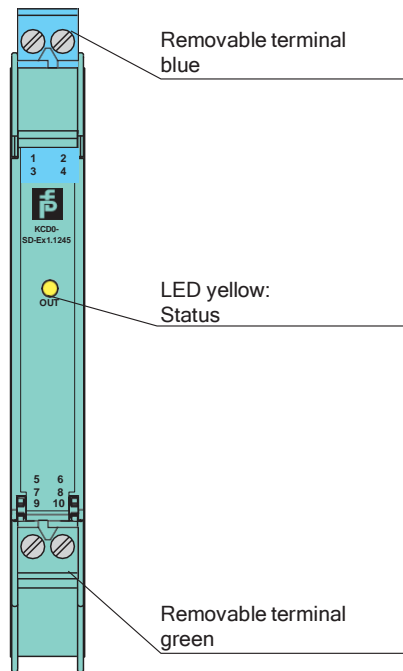
Current		≤ 72 mA at $U_i = 19\text{ V}$, ≤ 50 mA at $U_i = 30\text{ V}$ with 265 Ω output load ≤ 45 mA at $U_i = 19\text{ V}$, ≤ 31 mA at $U_i = 30\text{ V}$ with shorted output ≤ 14 mA at $U_i = 19\text{ V}$, ≤ 11 mA at $U_i = 30\text{ V}$ no load at output
Inrush current		≤ 200 mA after 100 μs
Output		
Connection side		field side
Connection		terminals 1+, 2-
Internal resistor	R_i	≤ 238 Ω
Current	I_e	≤ 45 mA
Voltage	U_e	≥ 12 V
Open loop voltage	U_s	≥ 22.7 V
Output rated operating current		45 mA
Output signal		These values are valid for the rated operating voltage 19 ... 30 V DC.
Energized/De-energized delay		single operation: typ. 1.7 ms/50 μs; periodical: typ. 5 μs/50 μs
Galvanic isolation		
Input/Output		reinforced insulation acc. to EN 50178, rated insulation voltage 300 V _{eff}
Indicators/settings		
Display elements		LED
Labeling		space for labeling at the front
Directive conformity		
Electromagnetic compatibility		
Directive 2014/30/EU		EN 61326-1:2013 (industrial locations)
Conformity		
Electromagnetic compatibility		NE 21
Degree of protection		IEC 60529
Protection against electrical shock		UL 61010-1
Ambient conditions		
Ambient temperature		-20 ... 60 °C (-4 ... 140 °F)
Mechanical specifications		
Degree of protection		IP20
Connection		screw terminals
Mass		approx. 100 g
Dimensions		12.5 x 119 x 114 mm (0.5 x 4.7 x 4.5 inch) (W x H x D), housing type A2
Mounting		on 35 mm DIN mounting rail acc. to EN 60715:2001
Data for application in connection with hazardous areas		
EU-type examination certificate		BASEEFA 06 ATEX 0170
Marking		1 II (1)G [Ex ia Ga] IIC, 1 II (1)D [Ex ia Da] IIIC, 1 I (M1) [Ex ia Ma] I
Output		[Ex ia Ga] IIC, [Ex ia Da] IIIC, [Ex ia Ma] I
Voltage	U_o	25.2 V
Current	I_o	110 mA
Power	P_o	693 mW
Input		
Maximum safe voltage	U_m	250 V (Attention! The rated voltage can be lower.)
Certificate		PF 06 CERT 0971 X
Marking		1 II 3G Ex nA IIC T4 Gc
Galvanic isolation		
Input/Output		safe electrical isolation acc. to IEC/EN 60079-11, voltage peak value 375 V
Directive conformity		
Directive 2014/34/EU		EN IEC 60079-0:2018+AC:2020, EN 60079-11:2012, EN 60079-15:2010
International approvals		
FM approval		
Control drawing		116-0419 (cFMus)
UL approval		
Control drawing		116-0420 (cULus)

Technical Data


IECEX approval	
IECEX certificate	IECEX BAS 06.0032
IECEX marking	[Ex ia Ga] IIC, [Ex ia Da] IIIC, [Ex ia Ma] I
General information	
Supplementary information	Observe the certificates, declarations of conformity, instruction manuals, and manuals where applicable. For information see www.pepperl-fuchs.com .

Assembly




Front view



Matching System Components

	K-DUCT-BU	Profile rail, wiring comb field side, blue
---	------------------	--

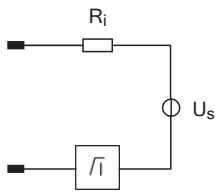
Accessories

	KC-ST-5GN	Terminal block for KC modules, 2-pin screw terminal, green
	KC-ST-5BU	Terminal block for KC modules, 2-pin screw terminal, blue
	KF-CP	Red coding pins, packaging unit: 20 x 6

Characteristic Curve

Output characteristics

Output circuit diagram



Output characteristic

